

Filter Vessel

VFH Series



Developed for aviation and industry applications

The Vertical Filter Housing (VFH) assembly provides three element options to meet the requirements in the aviation fuel filtration industry: Coalescer/Separator Element, Filter Monitor, Microfilter (Pre-filter).

Coalescer/Separator Element

The coalescer/separator system consists of two elements to generate a two stage separation process. A coalescer/separator element to be used to remove free water and fine solids, like rust, dirt and other contaminants from aviation fuels. The system is qualified to specification EI 1581 6th Edition.

Filter Monitor

A single stage system to be used to absorb water particles and to remove fine solids from aviation fuels. The filter monitor is qualified to specification EI 1583 7th Edition. Caution: Do not use this element with aviation fuels containing anti-icing additives (FSII)!

Microfilter

A single stage element to remove fine solids down to one micron from aviation fuels. When contaminated fuel enters the vessel, fine solids are removed, providing clean fuel to engines or equipment. The microfilter is qualified to specification EI 1590 3rd Edition. Micron rating available: 1 & 5 μm .

Application Area

- For use with JET Fuel, AVGAS, Diesel and MoGas

Technical Data

- Design and construction: 10 bar (145 psi)
- Flow rate: Up to 193 lpm (51 USgpm)

Standard Design

- Material: Die-casting aluminum head, steel filter bowl
- Components: Powder coated components
- Cover seal: NBR (Buna-N)
- In-/Outlet port: G1^{1/2}"
- Locking ring collar
- Manual vent valve
- Manual drain valve

Recommended Accessories

- Differential pressure gauge (with scale)
- Mounting bracket

Order Reference

Assembly	Item No.
VFH-1-355 (14")	3013853

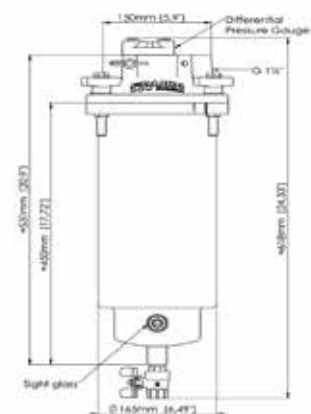
Micron Rating	Filter Element				Change Out Differential Pressure	Flow Rates	
	Coalescer/Separator		Filter Monitor	Microfilter		bar (psi)	lpm
(µm)	Type	Category	Type	Type			
1	CS6-355-1	C, Type S			1,0 bar (15 psi)	110	29
1	CS6-355-1	C, Type S-LW			1,0 bar (15 psi)	136	35
1	MCS6-355-1	M, Type S			1,0 bar (15 psi)	90	23
1			MO6.01C1-355-1-6B		1,0 bar (15 psi)	193	50
1				EIMF6.01C1-355-1	1,0 bar (15 psi)	177	46
5				EIMF6.01C1-355-5	1,0 bar (15 psi)	177	46

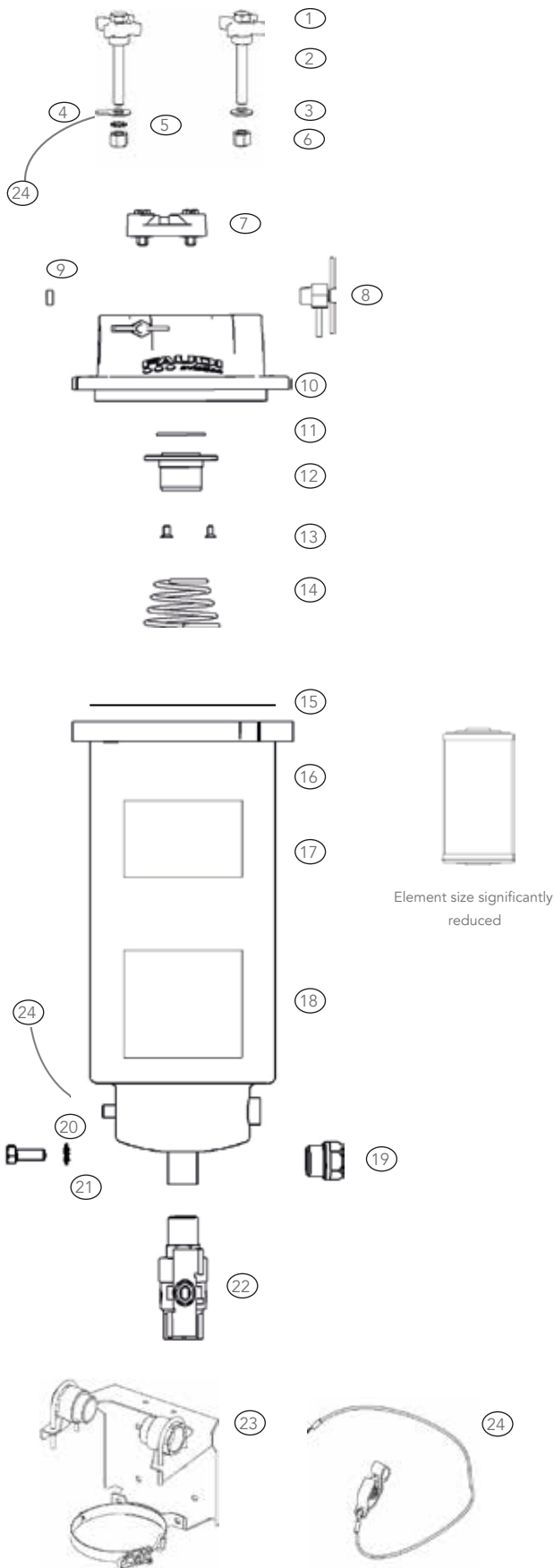
Please note: For Non-EI, AVGAS and MoGas applications, please contact our Customer Sales Support

Dimensions



Recommended torque wrench for all lid bolts is 15 Nm





No.	Item No.	Description
1	3013070	M12 Knob Handle Bolt
2	3006296	M12 Screw
3	3013347	Washer DIN522
4	9166828	Safety Plate DIN93
5	3007785	Lock Washer
6	2004563	M12 Hex Nut (Teflon®)
7*	3013459	DP Gauge 444-15 MID-W
	3013754	Alternative: GTP-9700-D
8	3013116	1/8" NPT Vent Valve
9	9154428	G 1/8" Locking Bolt
10	3013058	VFH Head
11	3013256	O-Ring NBR (Buna-N)
12	3013074	Cartridge Spigot
13	3013257	Flat-head Screw
14	3013346	Conical Spring

Coalescer/ Separator		Filter Monitor		Microfilter	
Description	Item No.	Description	Item No.	Description	Item No.
CS6-355-1	3003984	MO6.01C1-355-1-6B	3011554		
MCS6-355-1	3004507				
				EIMF6.01C1-355-1	3012219
				EIMF6.01C1-355-5	3012220

15	3013661	O-Ring NBR (Buna-N)
16	3013055	VFH Housing
17	3013823	Nameplate Element
18	3013602	Nameplate Vessel
19	3013585	G1/2" Sight Glass
20	3013481	Screw
21	3013480	Circlip
22	3013369	Ball Valve

23*	3013392	Mounting Bracket with two G 1 1/2" Fittings
24*	3013887	Grounding Cable

*Optional Accessories

VESSELS